

Tell us about your case

Name (*)

E-mail (*)

Address

City (*)

State

Zip Code

Phone

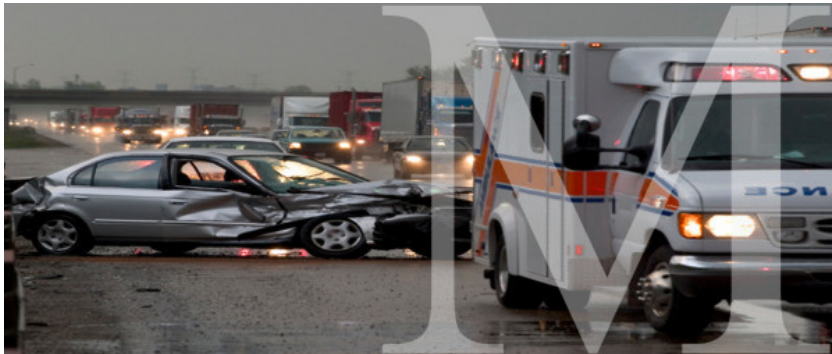
Tell Us About Your Case

Verify
Submission



Submit

18 Wheeler Wrecks



If you or a family member have been involved in an accident with an 18 wheeler, you know how painful and costly the consequences can be. The size alone of the 18 wheeler creates a greater impact and results in injuries that are severe and often fatal. You need a law firm that understands the medical complications that may result from an 18 wheeler crash and the laws and factors that will have an influence on your case. You need the Monsour Law Firm. We can help.

18 Wheeler Crash Information

What are the common causes of 18 wheeler wrecks?

Many factors contribute to the frequency of 18 wheeler crashes including:

- Driver fatigue
- Driving under influence of drugs or alcohol
- Failure to properly to accommodate blind spots
- Brake failure
- Excessive speed and failure to follow rules of the road
- Tire failure or separation
- Unsecured cargo or freight shifting
- Unsafe driving practices

Tractor-trailers are frequently operated on tight schedules that cause the truck drivers to drive their trucks for unreasonably long periods of time at high rates of speed.

How often do 18 wheeler crashes occur?

In 2009, there were approximately 296,000 crashes involving large trucks in the United States. Large truck wrecks account for 3.1 percent of total crashes. Of the 3,215 large trucks involved in fatal crashes in the nation, 73 percent were combination trucks. Fatal accidents involving large trucks made up 7 percent of all fatal crashes in the U.S.

What should I do if I, or a loved one, have been involved in an 18 wheeler accident?

It is important to consult a personal injury attorney that is experienced in 18 wheeler accident litigation and has the skill and resources to get you the best possible results. The Monsour Law Firm will represent you with the diligence and determination you deserve. We will provide a complimentary case review and recommend a course of action to help you receive the correct compensation for your injuries and financial losses. [We can help.](#)

